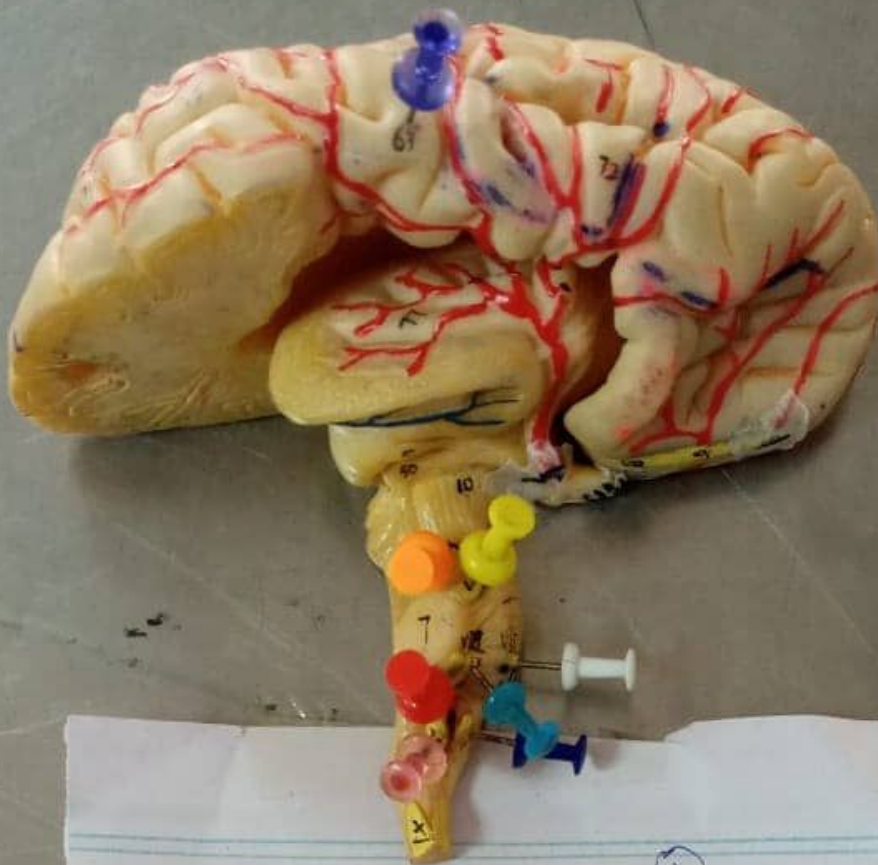


BRAIN

- 1 - Genu of corpus Callosum
- 2 - Body " "
- 3 - Optic chiasm " "
- 4 - Septum pellucidum
- 5 - Fornix
- 6 - Telia ~~Choroidia~~ Choroidia &
- 7 - Interthalamic adhesion
- 8 - Hypothalamus
- 9 - Optic chiasm
- 10 - Anterior Commissure
- 11 - Mammillary body
- 12 - Midbrain
- 13 - Pons
- 14 - Medulla



- 1- Olfactory bulb
- 2- Olfactory tract
- 3- Optic Chiasm
- 4- Anterior cerebral Artery
- 5- Posterior " "
- ~~6- Oculomotor Nerve~~

~~Blue~~ Blue pin → hypoglossal N.
White → Facial N.

Orange → Trochlear N.

Red → Glossopharyngeal N.

Yellow → Trigeminal N.

purple → oculomotor N.

Pink → Vagus N.

Turquoise → Vestibulocochlear N.

(11)



- 1 -> vertebral Artery
- 2 - Basilar Artery
- 3 - Pontine A Ant. inferior Cerebellar A
- 4 - Pontine
- 5 - Superior Cerebellar
- 6 - Posterior cerebral
- 7 - Posterior communicating



