

Station 1

- a) Identify the slide***
- b) What is Barr body***

CASTOR OIL



Unobserved Station 7

Marks: 04

Time Allowed: 3.

For Candidate:

Task:

Carefully examine the specimen and answer the following questions:

1. What is the mechanism of action? 02
2. What is the antidote? 02

(Cut along the dotted line)



a) Identify the weapon?

(1)

b) Write down three differences between entry and

How will you send organs obtained from autopsy? (4) in suspected case of poisoning in routine to ~~chemi~~ Forensic Science Lab?

a) Identify the given specimen (1)

b) Define (3)

I. Korsakoff's psychosis

II. Delirium tremens

... the art and science of preserving
by treating them (with chemicals) to forestall decomposition

Station 5

- a) Identify the model
- b) Define the phenomena shown?
- c) Name the organ which putrefies last?

(1)

(2)

(1)

... is the art and science of preserving
... by ... them (with chemicals) to forestall decomposition.

Station 3

- a) Identify the model.
- b) Write down three differences between entry and exit wound. (3)

(1)

(3)

6

a) Classify snakes according to system they affect (1 ½)

b) Give five constituents in the snake venom (2 ½)

- ① Zootoxins
- ② Neurotoxins
- ③ Hemotoxins
- ④ Fasciculins

CONTACT FIREARM ENTRY WOUND ON FOREHEAD



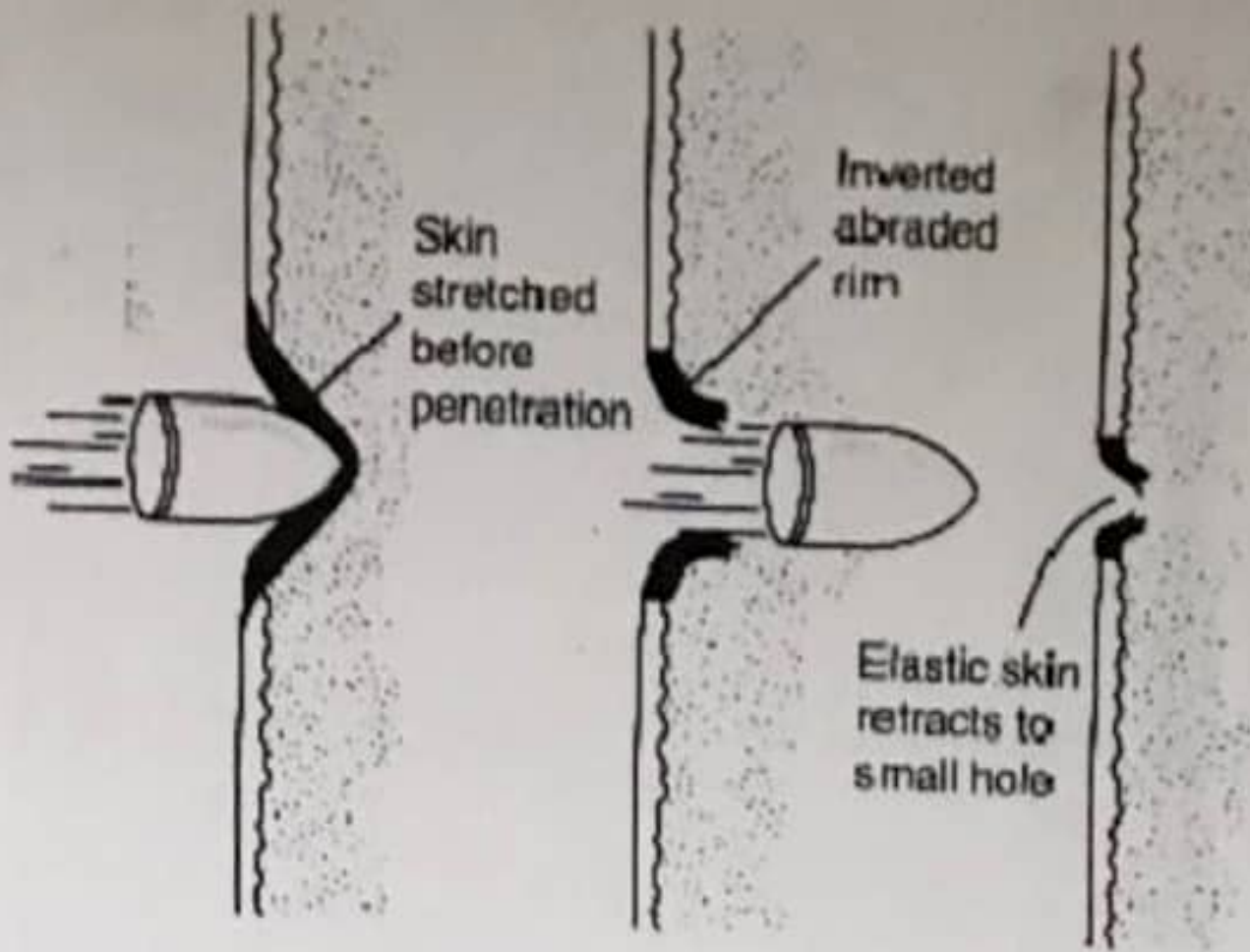
COPPER SU











Entrance



Department of
Forensic Medicine & Toxicology
Azra Naheed Medical College



SUICIDE BY PLASTIC BAG





CASE OF THROTTLING SHOWING ABRASIONS AND BRUISES



SHOTGUN FIRE ON CHEST AT ABOUT 5 FEET DISTANCE



Department of
Forensic Medicine & Toxicology
Azra Naheed Medical College



- a) Identify weapon what kind of injury is produced by it. (1)
- b) Give four differences between entry & exit wound. (3)







Series 04
Eds Candidate:
Zaki

Carefully examine the bone and answer the following questions:

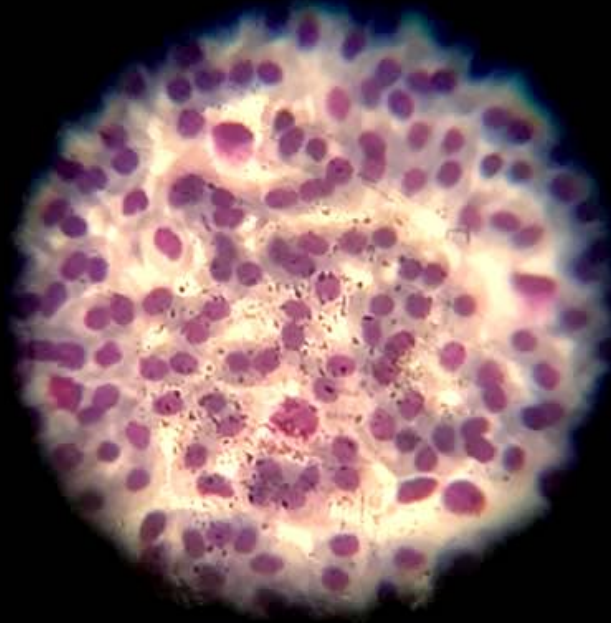
1. Identify the sex. 1.5
2. Name three other bones which help to determine sex. 2.5

(Cut along the dotted line)

Unobserved Station 4 Time Allowed: 2.5 minutes

A- XVII





CLASS 11
PAPER 4

Record the dying declaration of the subject.

Station 1

- a) Identify the slide. (2)
- b) What is Locard exchange principle? (2)

- a) Identify the slide (1)
- b) Give two points of identification. (1)
- c) Name the chemical tests for its screening and confirmation. (2)

Station 10

1

1- Identify the weapon

2- A 40 yrs old man was hit by a hammer, what kind of

1.5

injuries it can cause?

3- The wound when examined was spindle shaped 3*2cm on

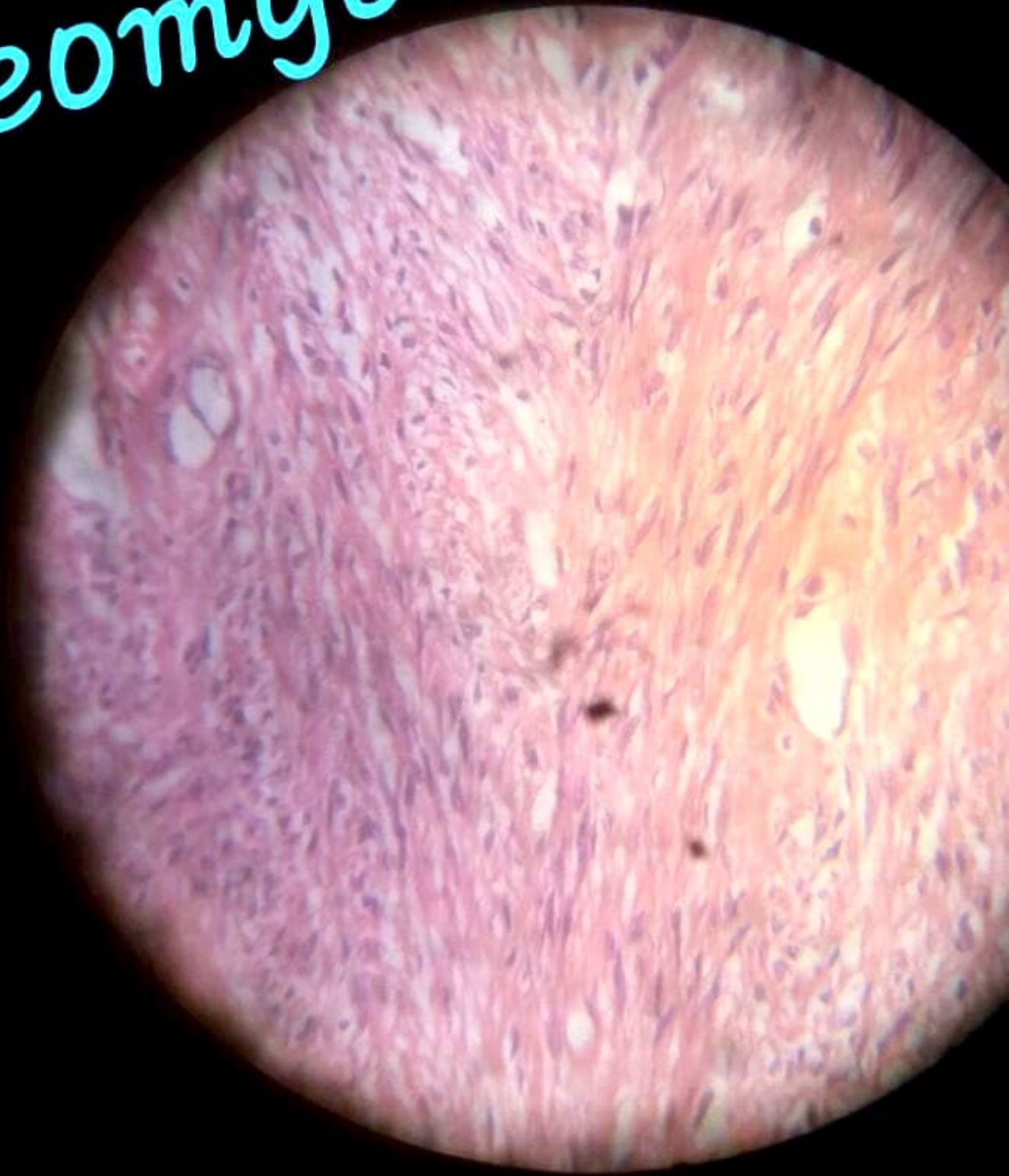
1.5

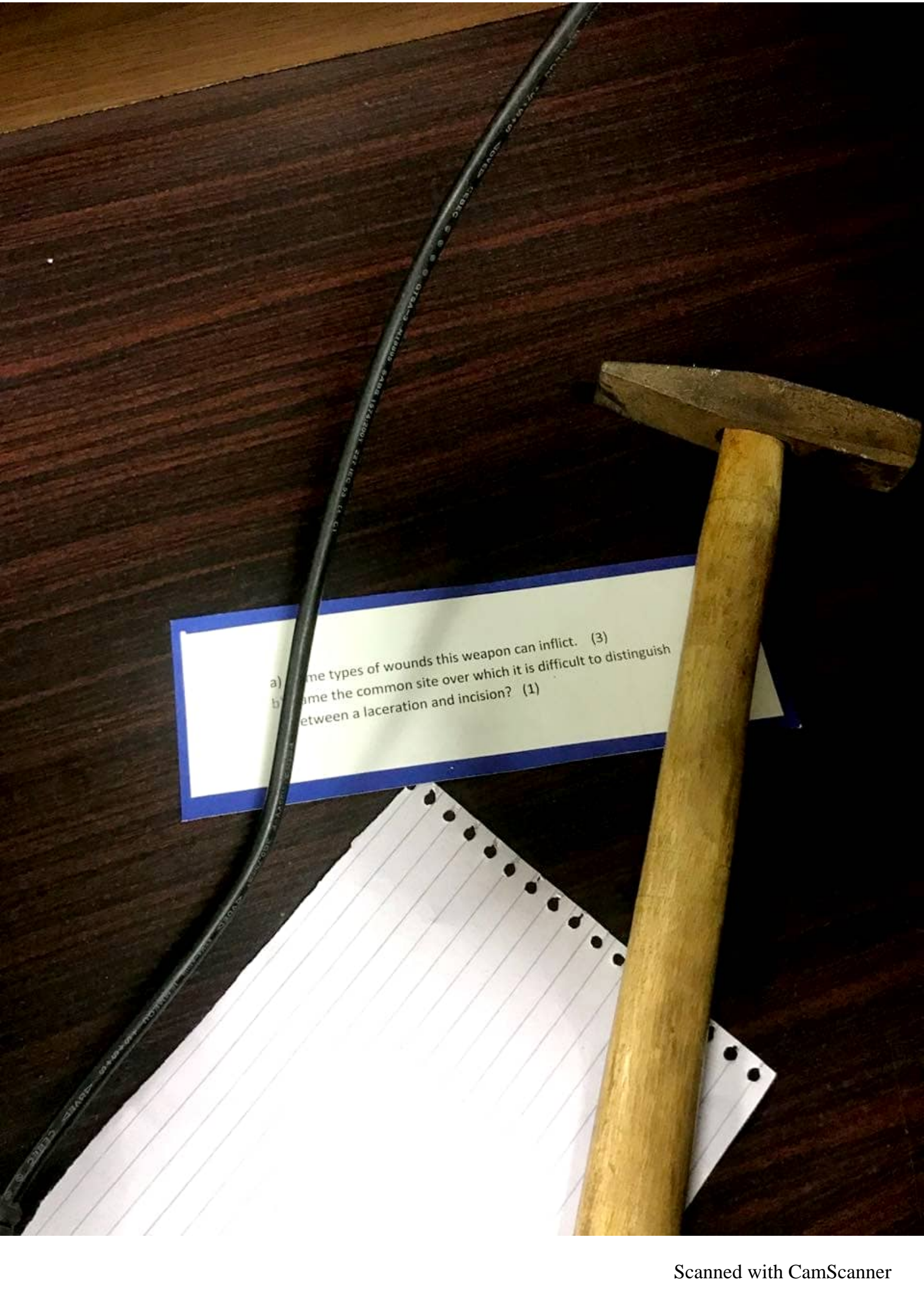
Left forearm. Bone was exposed. How will you classify this

(4)

according to Qisas and Diyat Law?

Leiomyoma



- 
- A photograph showing a hammer with a wooden handle and a metal head, and a black wire with some text on it, resting on a dark wooden surface. A small white card with a blue border is placed over the wire and hammer. The card contains two questions. Below the card is a piece of white lined paper with three hole punches on the right side.
- a) Name the types of wounds this weapon can inflict. (3)
- b) Name the common site over which it is difficult to distinguish between a laceration and incision? (1)

An elderly male died one day after developing hypostatic pneumonia. He remained bed ridden for the previous 10 days after fall from the ladder which caused fracture neck of left femur.

Read carefully the scenario and fill the medical certificate of death in this case. (4)

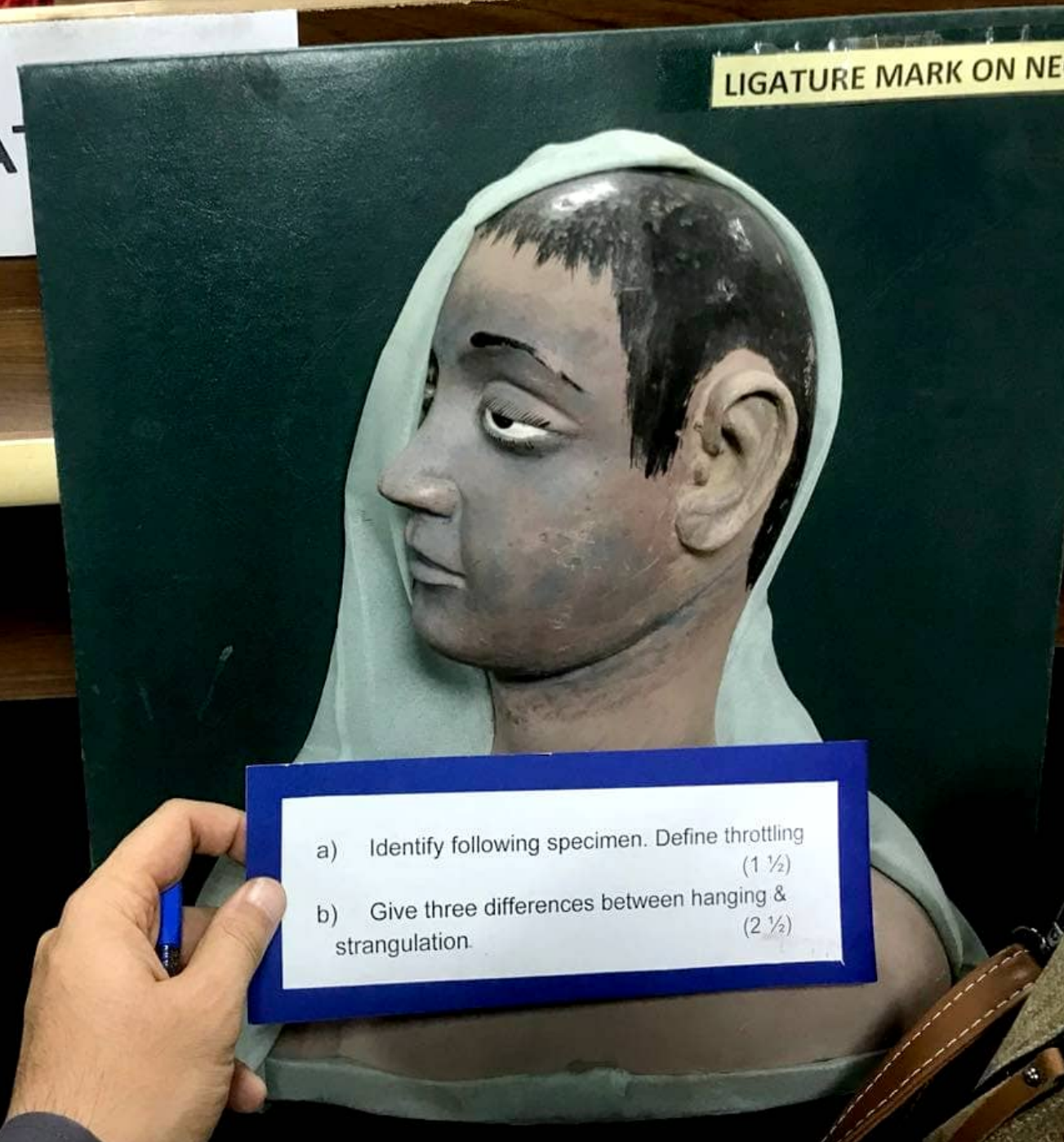
CAUSE OF DEATH	INTERVAL BETWEEN ONSET AND DEATH	
<p>1.</p> <p>Disease or condition directly leading to Death</p>	(a).....
<p>Antecedent causes, morbid conditions if any</p>	(b)
<p>Giving rise to the above cause, stating the</p>	Due to (or as a consequence of)	
<p>Underlying condition last</p>	(c).....
<p>2.</p> <p>Other significant conditions contributing To the death, but not related to the Disease or condition of causing it</p>

- a) *Identify the slide?* (1)
- b) *Define medullary index?* (2)
- c) *Name the species specific test?* (1)

How will you send a blood stained cloth to chemical examiner? (4)

STAT

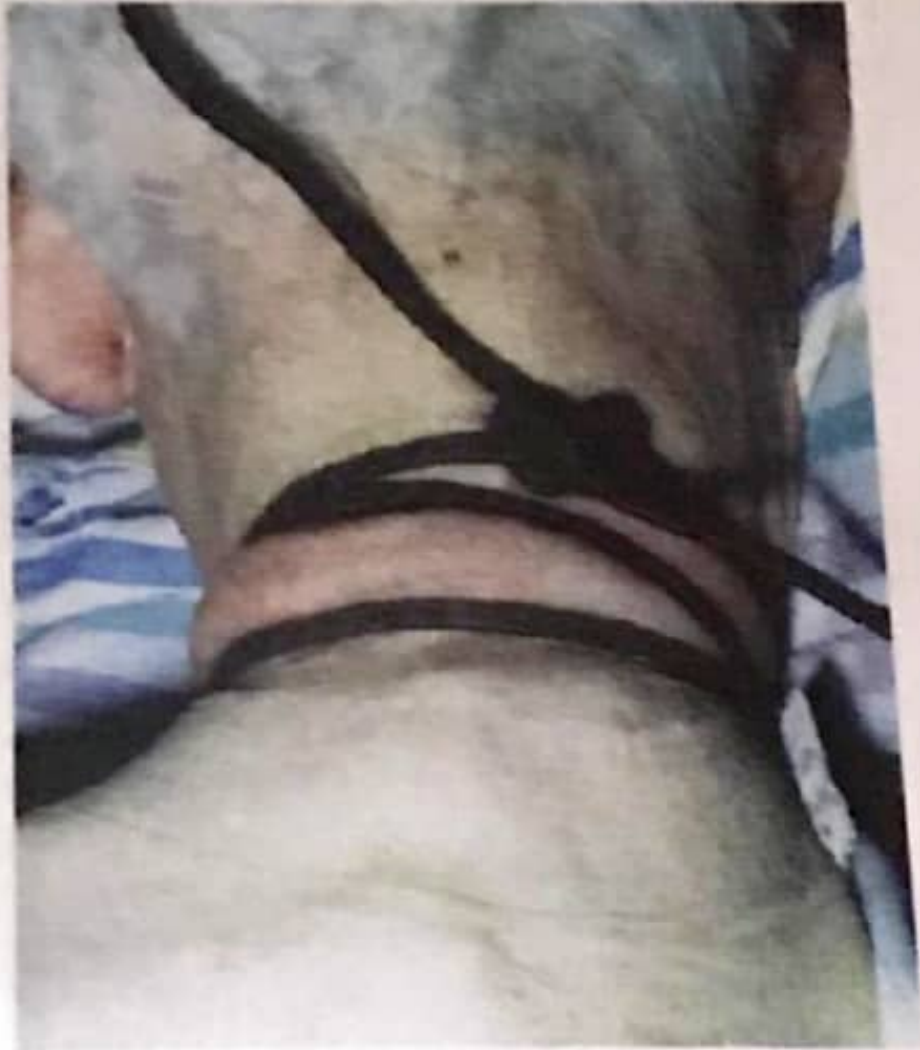
LIGATURE MARK ON NECK

- 
- a) Identify following specimen. Define throttling (1 ½)
- b) Give three differences between hanging & strangulation. (2 ½)



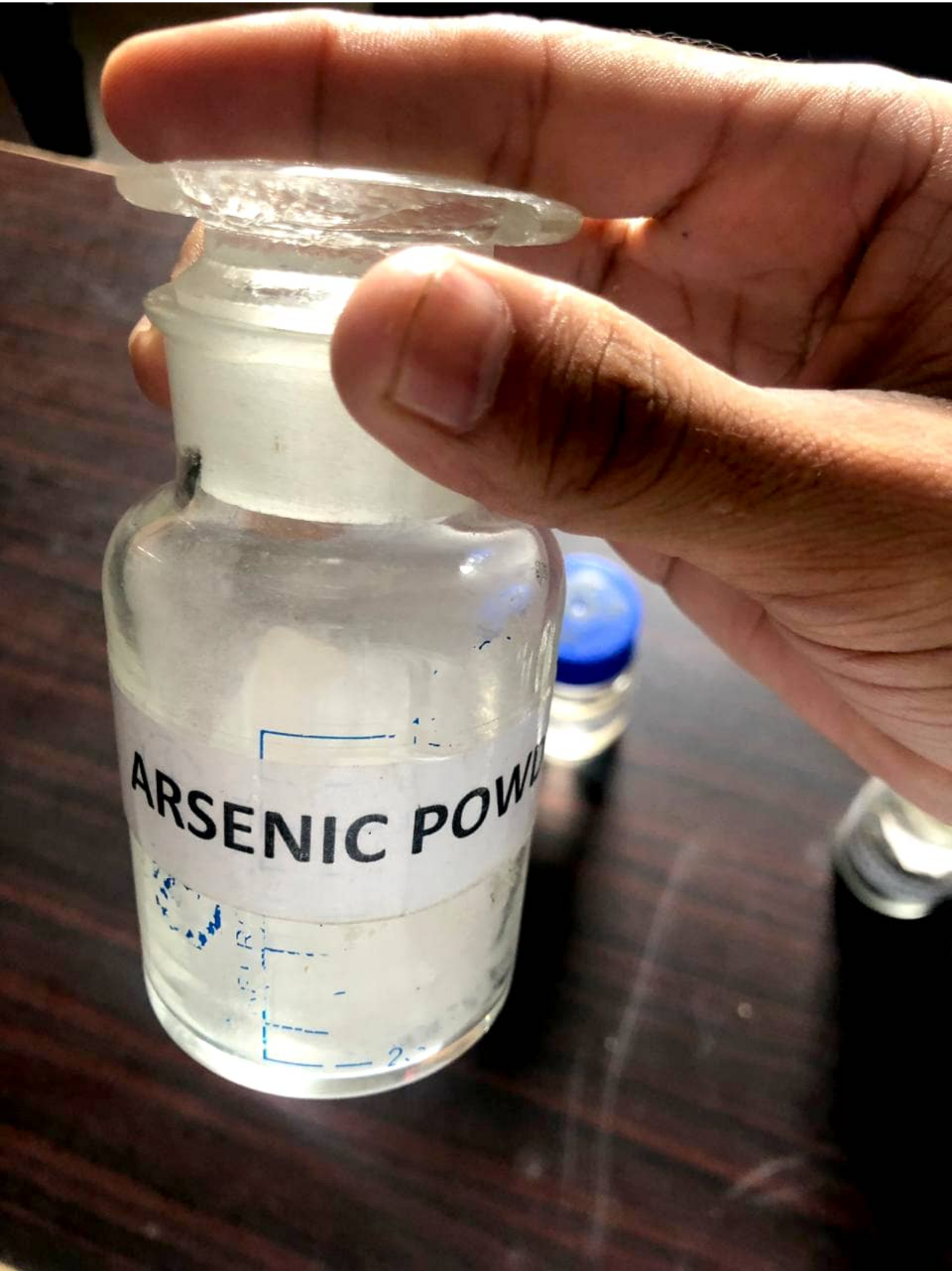
- a) *Classify snakes according to system they affect* (1 ½)
- b) *Give five constituents in the snake venom* (2 ½)

STRANGULATION



ED MEDICAL

Department of



FLAME BURNS WITH SINGEING OF H (SUICIDAL BURNS USING PETROL)

- a) Identify the model? (1)
b) Enlist three differences between ante mortem and post mortem burns? (3)

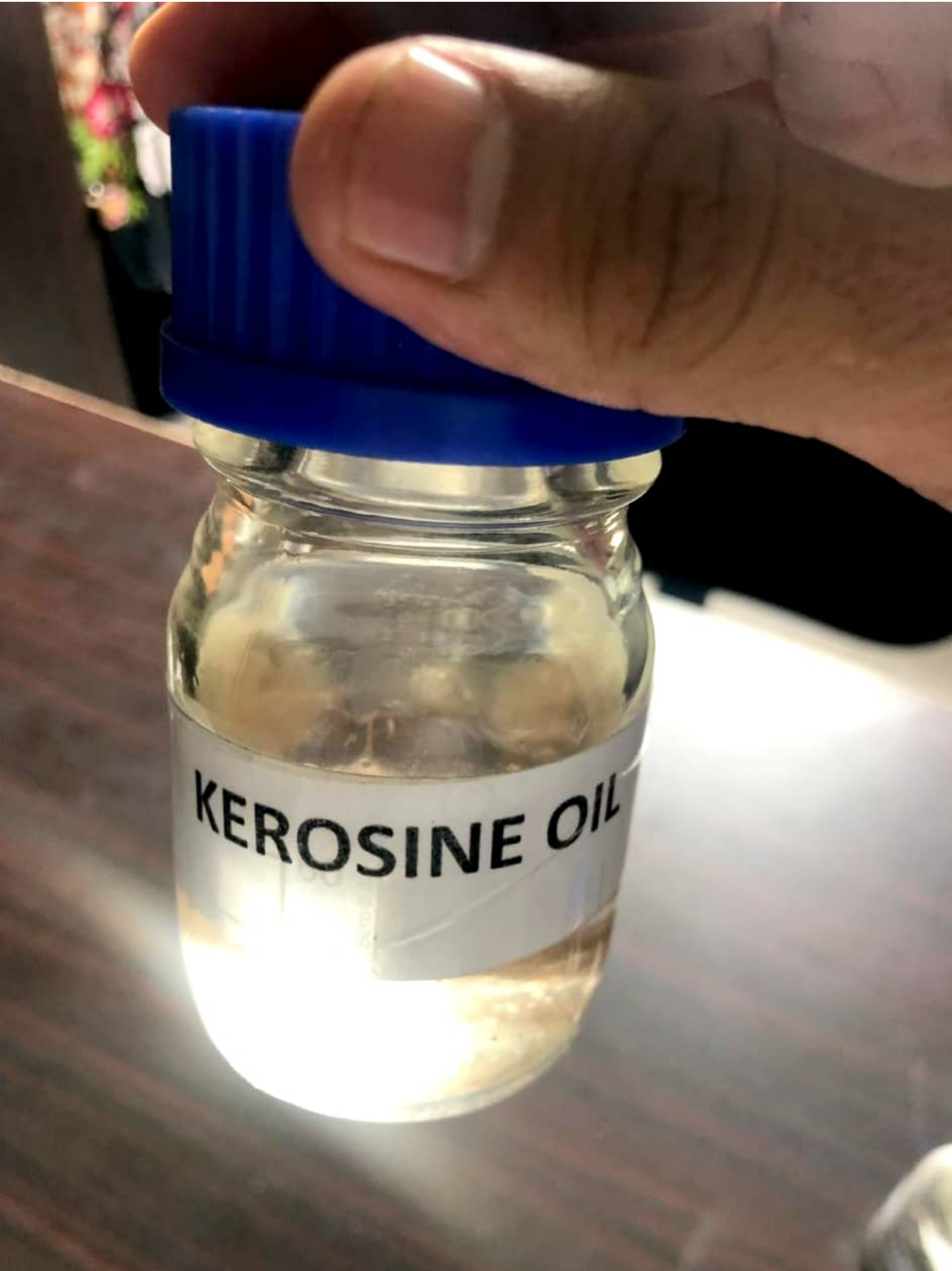


**Dry flame burns with singeing of hair
(suicidal burns using petrol)**



Roll No. 114 36159
Answer Sheet No.
Continuation Sheet No.
Station: 8
Male & Female Pelvis
blw Female
Wide Oval
Social - prominent
Small - prominent
Ratio of max - bread


Station (8)
a) Give three differences between male & female pelvis (3)
b) Define cephalic index (1)



HANGING



Department of
Forensic Medicine & Toxicology

- 
- a) Identify the instrument.
b) What are objectives of medicolegal autopsy?

SPLIT LACERATIONS ON FOREHEAD

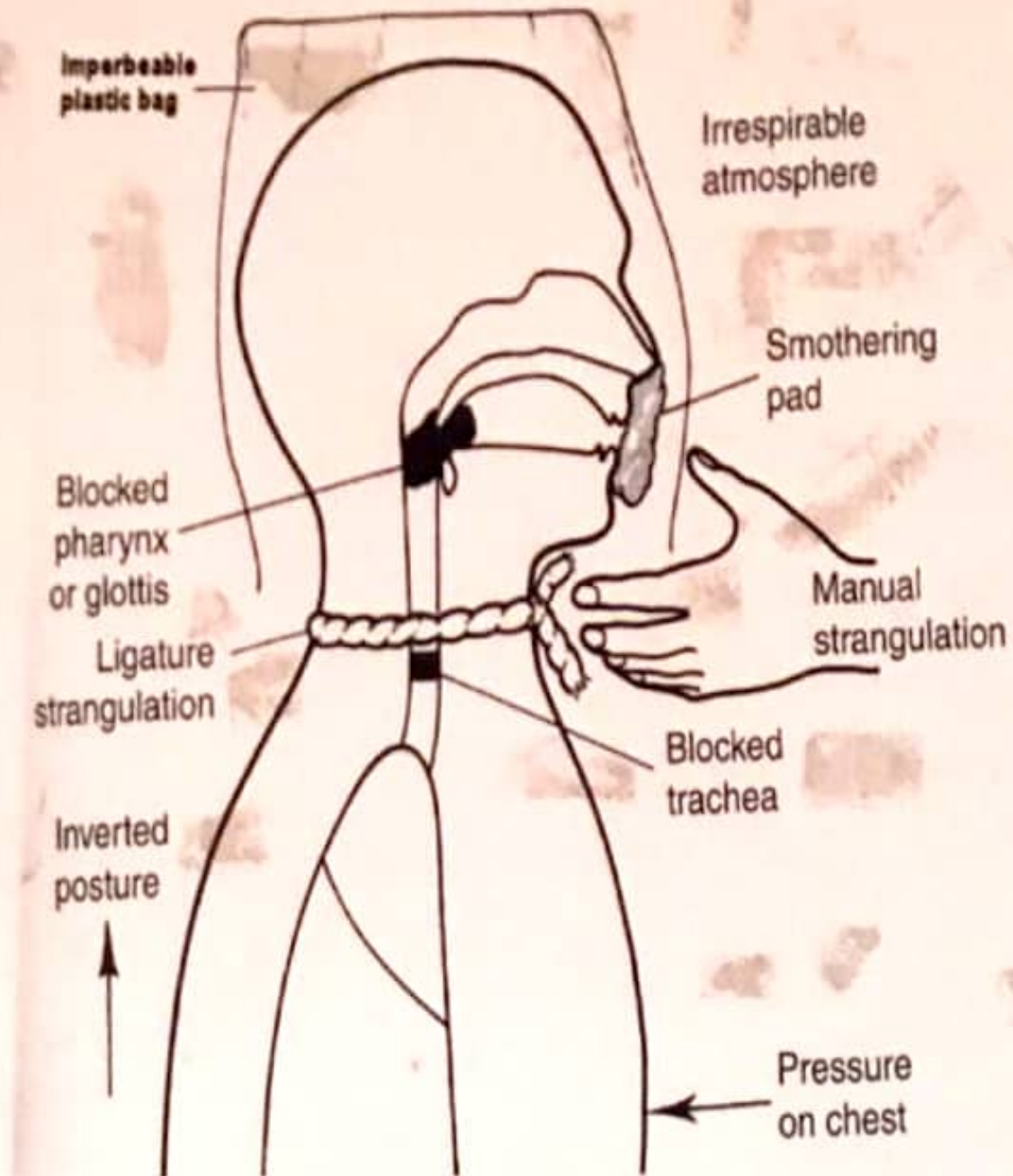


HANGING



Department of
Forensic Medicine & Toxicology
Azra Naheed Medical College

LEVELS OF MECHANICAL ASPHYXIA





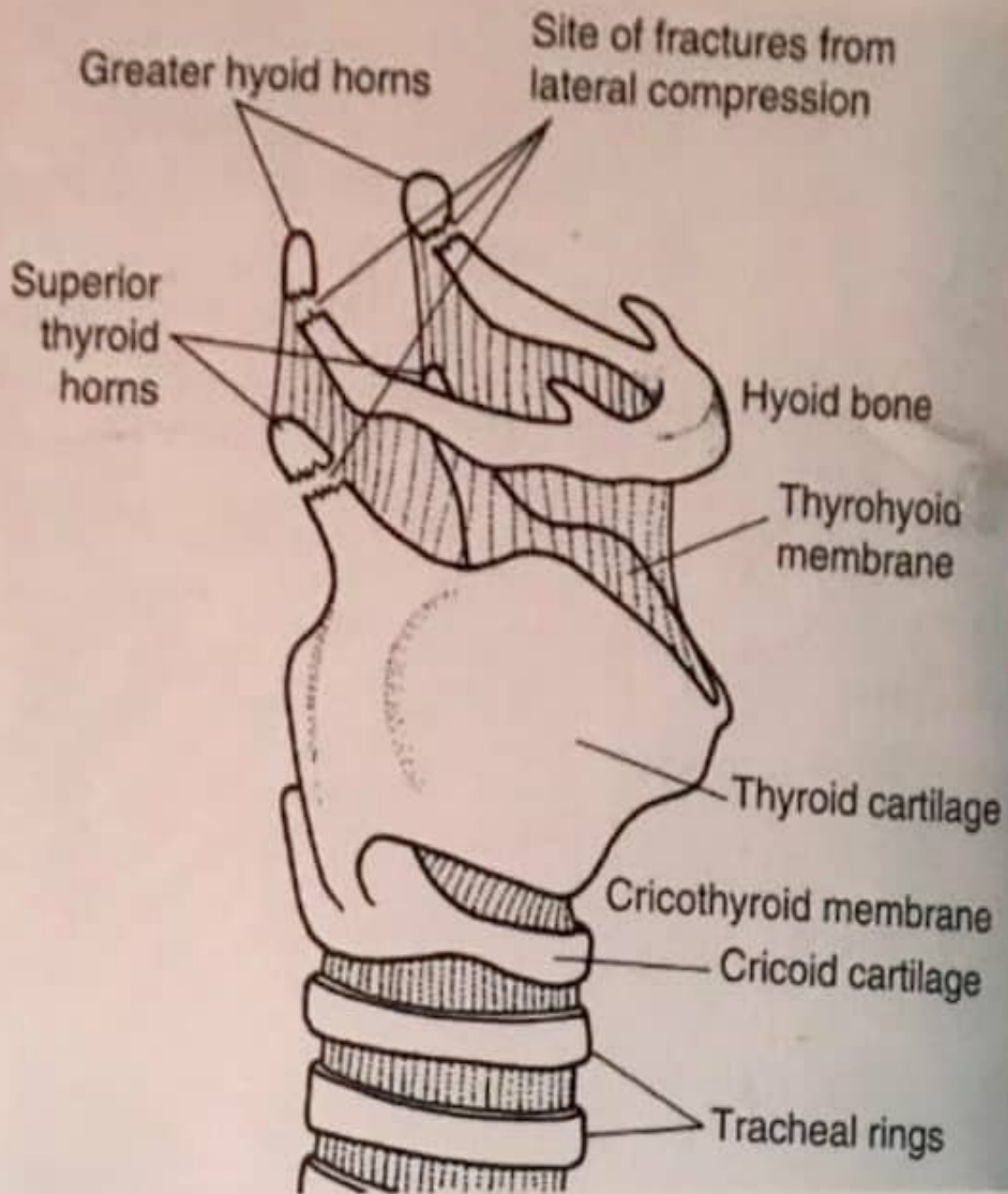


RIFLED FIREARM EXIT WOUND ON HEAD



Department of
Forensic Medicine & Toxicology

NECK STRUCTURES COMMONLY DAMAGED IN THROTTLING



Department of
Forensic Medicine & Toxicology
Azra Naheed Medical College

IMPRINT BRUISE DUE TO PRESSURE OF MUZZLE END OF BARREL



Department of
Forensic Medicine & Toxicology

RIFLED FIREARM ENTRY WOUND ON TEMPLE



Department of
Forensic Medicine & Toxicology
Azra Naheed Medical College



Department of
Forensic Medicine & Toxicology
Azra Naheed Medical College

CONTACT FIRE ON FOREHEAD



BRUISE ON CHEST AND ARM



Department of
Forensic Medicine & Toxicology
Azra Naheed Medical College

ASPHYXIAL DEATH SHOWING PATECHIAL
HAEMORRHAGES



SUICIDAL CUT ON WRIST



Department of
Forensic Medicine & Toxicology
Azra Naheed Medical College

**BLOWBACK PHENOMENON
IN SUICIDAL FIRE**



Department of
Forensic Medicine & Toxicology
Azra Naheed Medical College

CONTACT SHOTGUN FIRE ON ABDOMEN



BRUISES ON SOLES (POLICE TORTURE CASE)

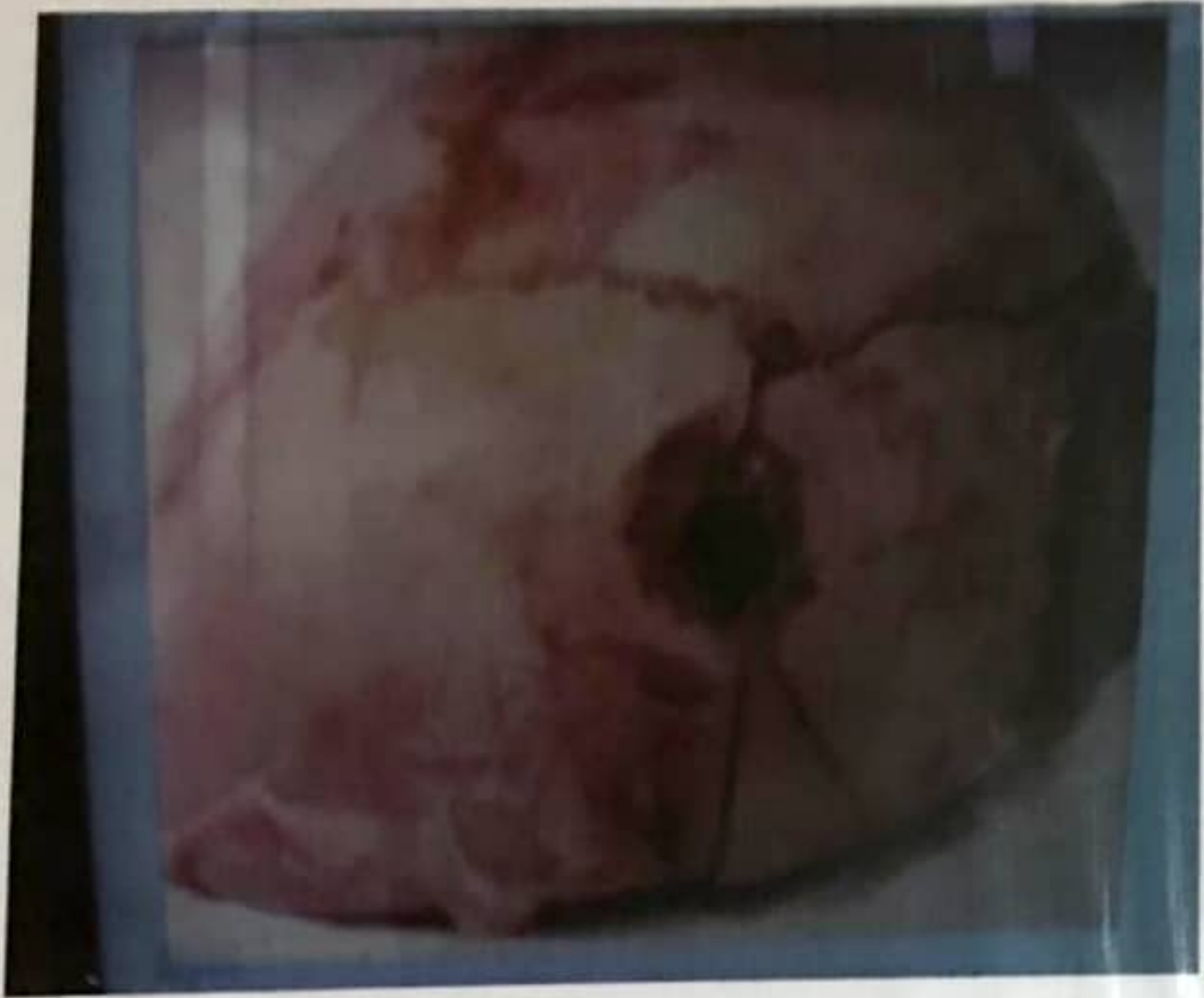


Department of
Forensic Medicine & Toxicology
Azra Naheed Medical College



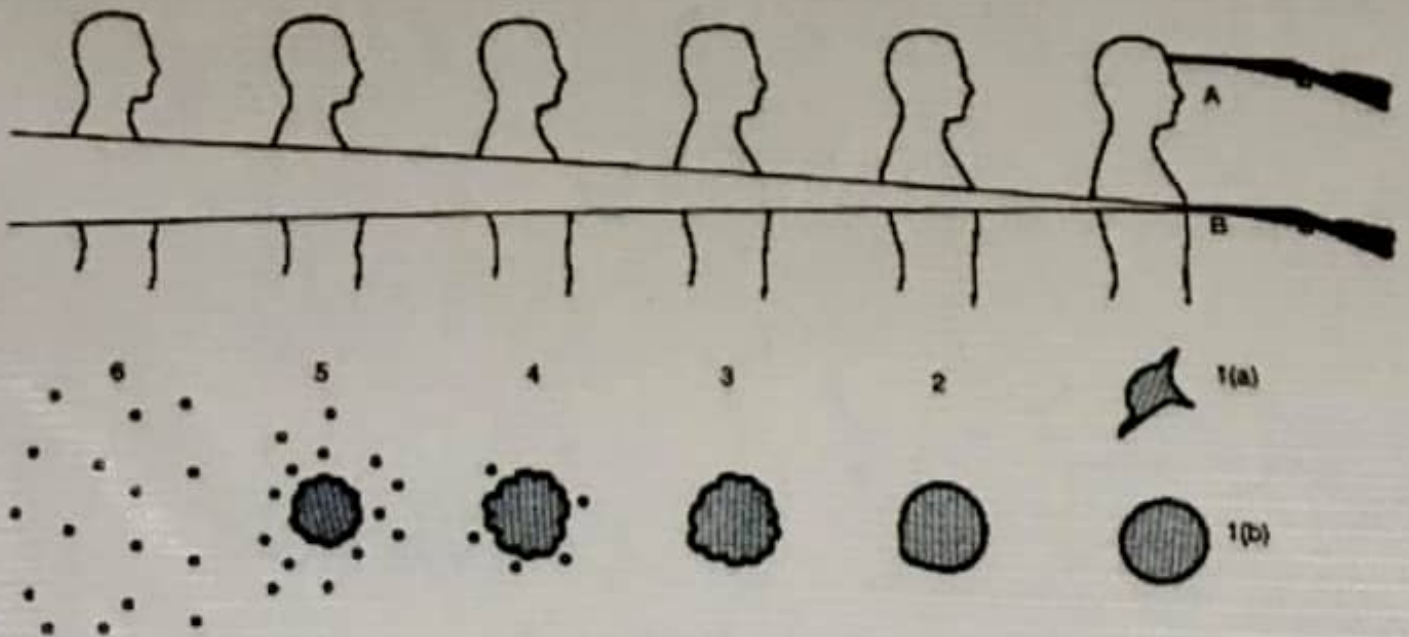
Nose cut with knife

BEVELING IS PRESENT IN EXIT WOUND ON SKULL



Department of
Forensic Medicine & Toxicology
Azra Naheed Medical College

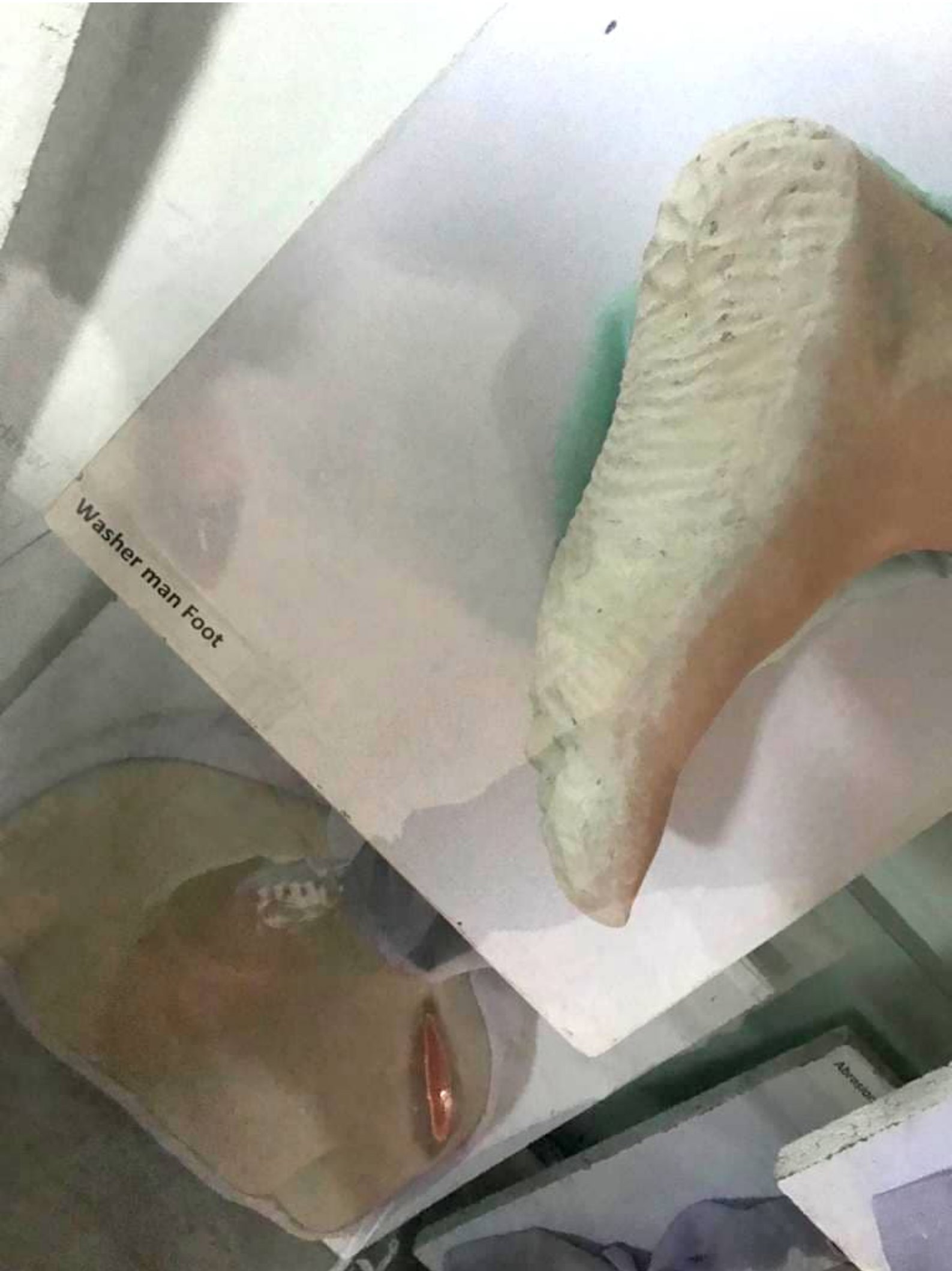
SHOTGUN FIRE AT VARIOUS DISTANCES

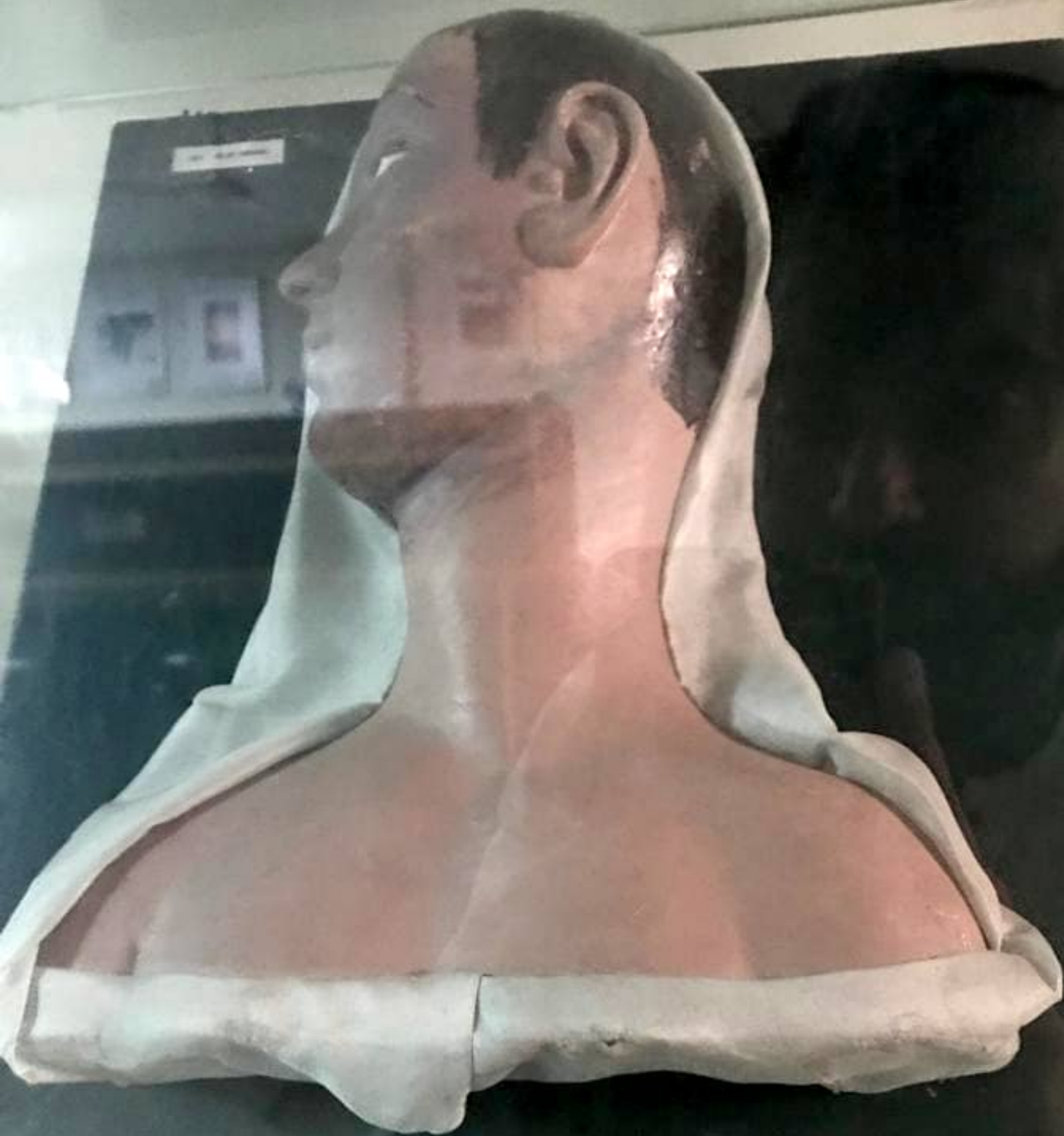


Department of
Forensic Medicine & Toxicology



THROT



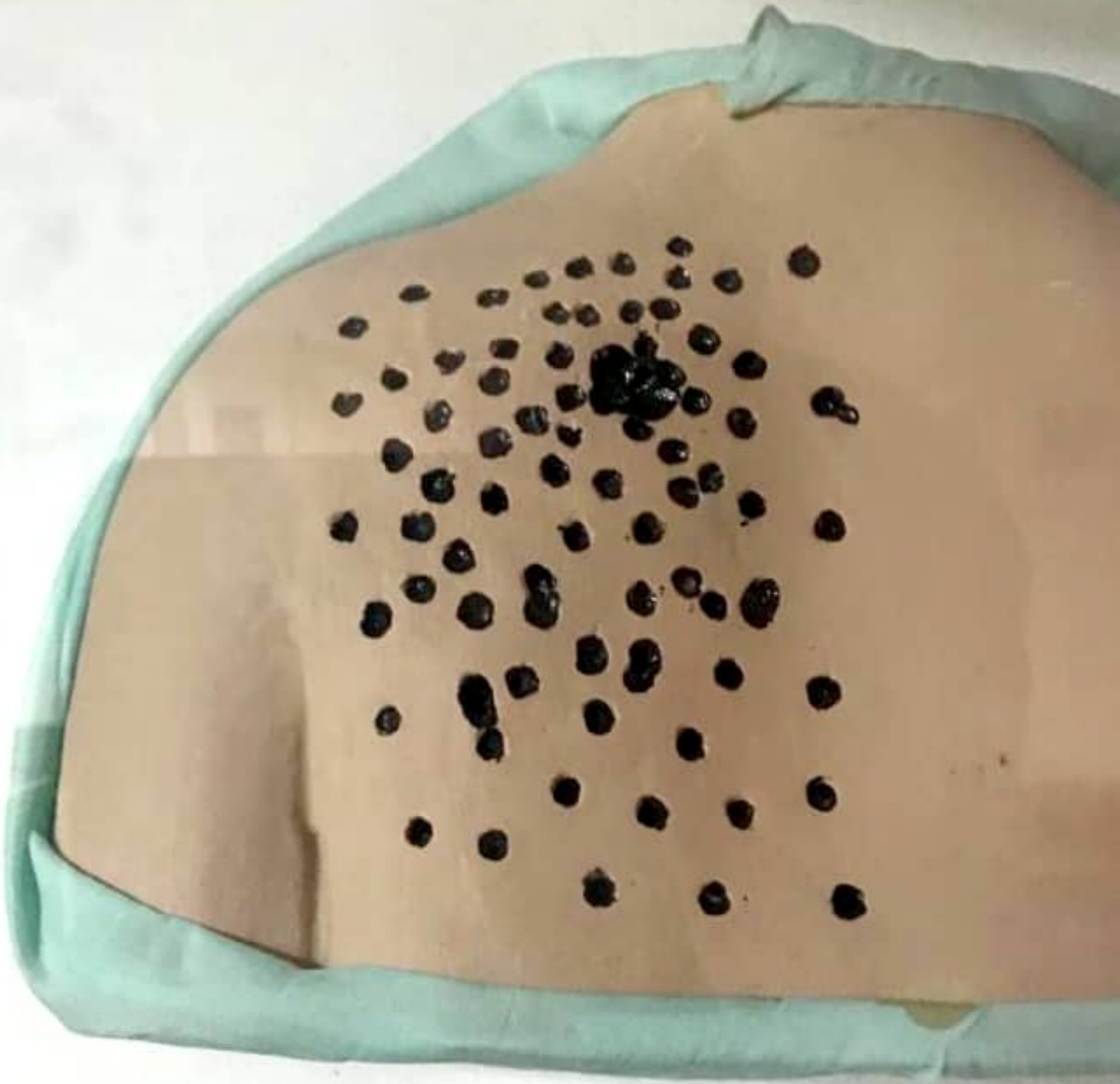


LIGATURE MARK ON NECK

Station 9

- a) Identify the weapon. (1)
- b) A 40 year old man was hit by a hammer, what kind of injuries it can cause? (1.5)
- c) The wound when examined was spindle shaped 3x2 cm on left forearm. Bone was exposed. How will you classify this according to Qisas and Diyat law? (1.5)
- got fractured his radius without displacing it.*

Pallet Gun Shot

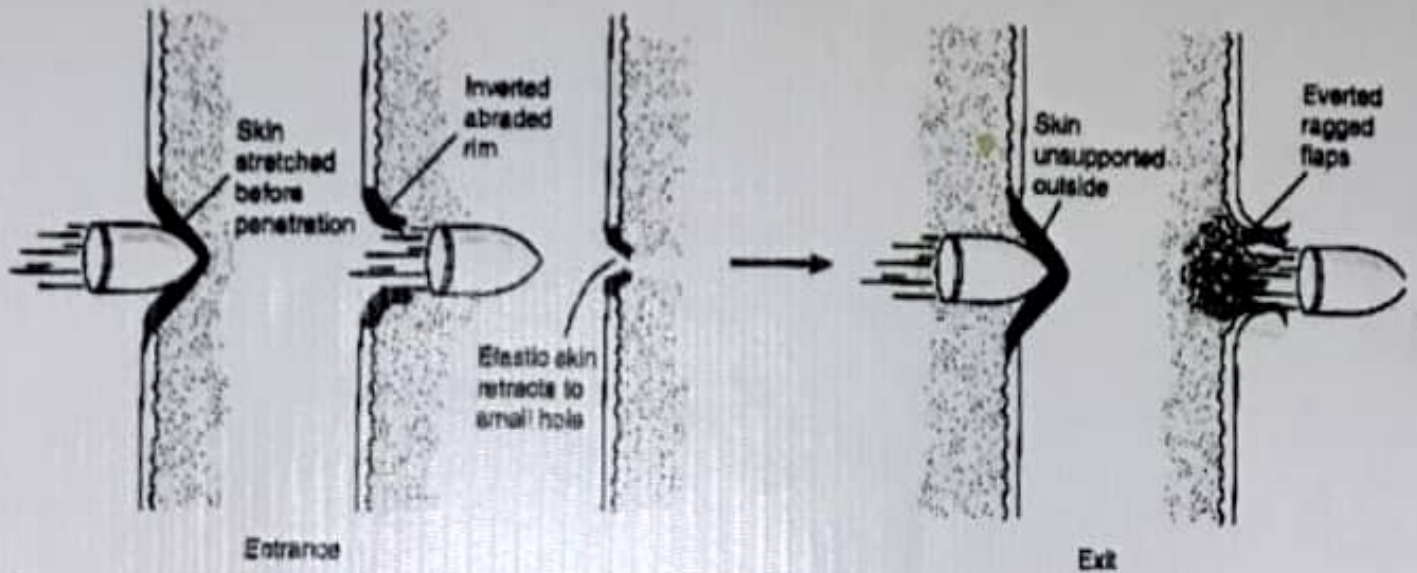


CADAVERIC SPASM



- a) Identify the model? (1)
- b) What do you understand from casper dictum? (2)
- c) Define forensic entomology? (1)

TRAVEL OF BULLET THROUGH BODY

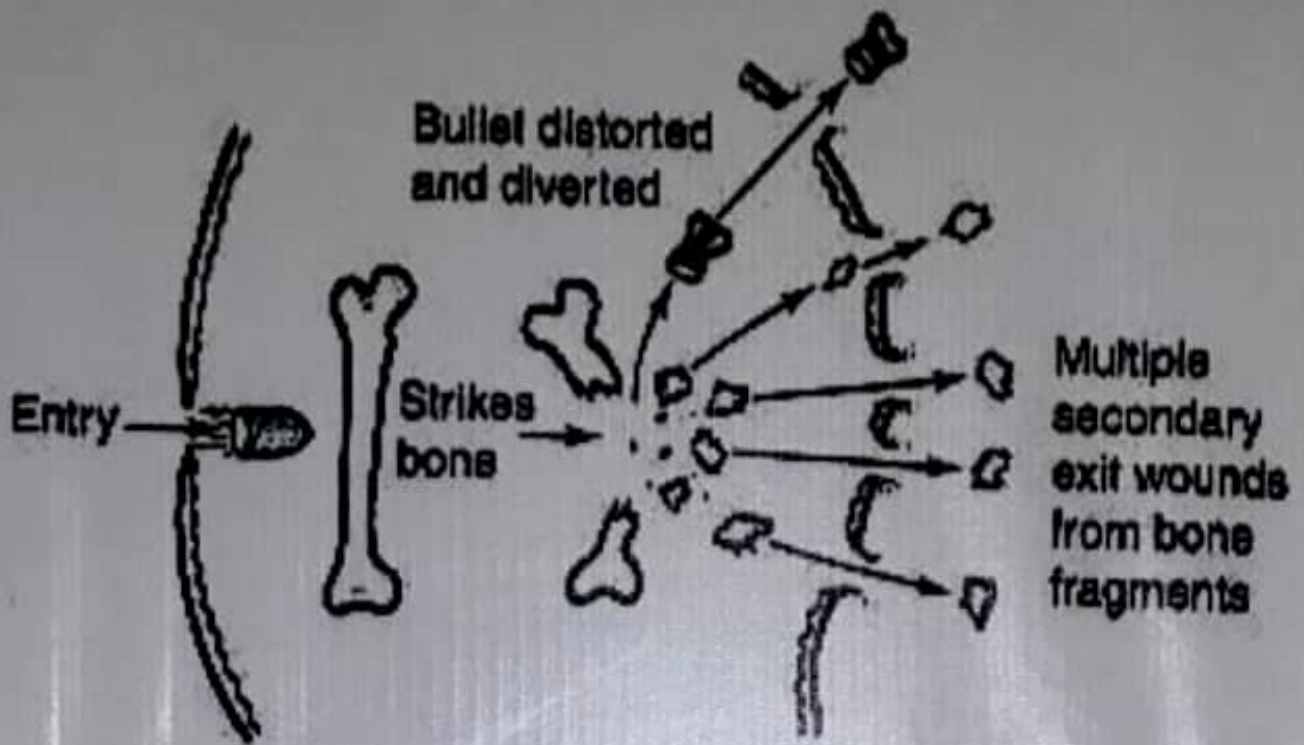


Department of
Forensic Medicine & Toxicology
Nalheed Medical College

LACERATED WOUND



SECONDARY MISSILE EFFECT IN FIREARM INJURY



Department of
Forensic Medicine & Toxicology
Azra Naheed Medical College

Card's exchange principle

...ing to
to forestall decomposi...

Marks: 04

Unobserved

Time Allowed: 3.5 minutes

Marks: 04
For Candidate: (Station 8)

Task:

Carefully examine the given model/durapicture/projection and answer the following questions:

1. Identify finger print pattern. 02
2. Name the finger print pattern most common in general population. 02

A-5

What information can be furnished from this bone? (4)

AMMUNITION (BULLETS & CARTRIDGES)



Department of
Forensic Medicine & Toxicology
Azra Naheed Medical College

Electric Burn





Incised wound on chest





Station 5

- a) Identify the model (1)
- b) Comment whether phenomena shown is ante mortem or postmortem. (1)
- c) Define marbling. (2)



und on chest

Homicidal cut throat

Homicidal cut throat









DEFENCE WOUNDS ON HAND



Department of
Forensic Medicine & Toxicology
Azra Naheed Medical College

9. How will you send a blood stained cloth to
~~chemical examiner~~ (4)

PFSA

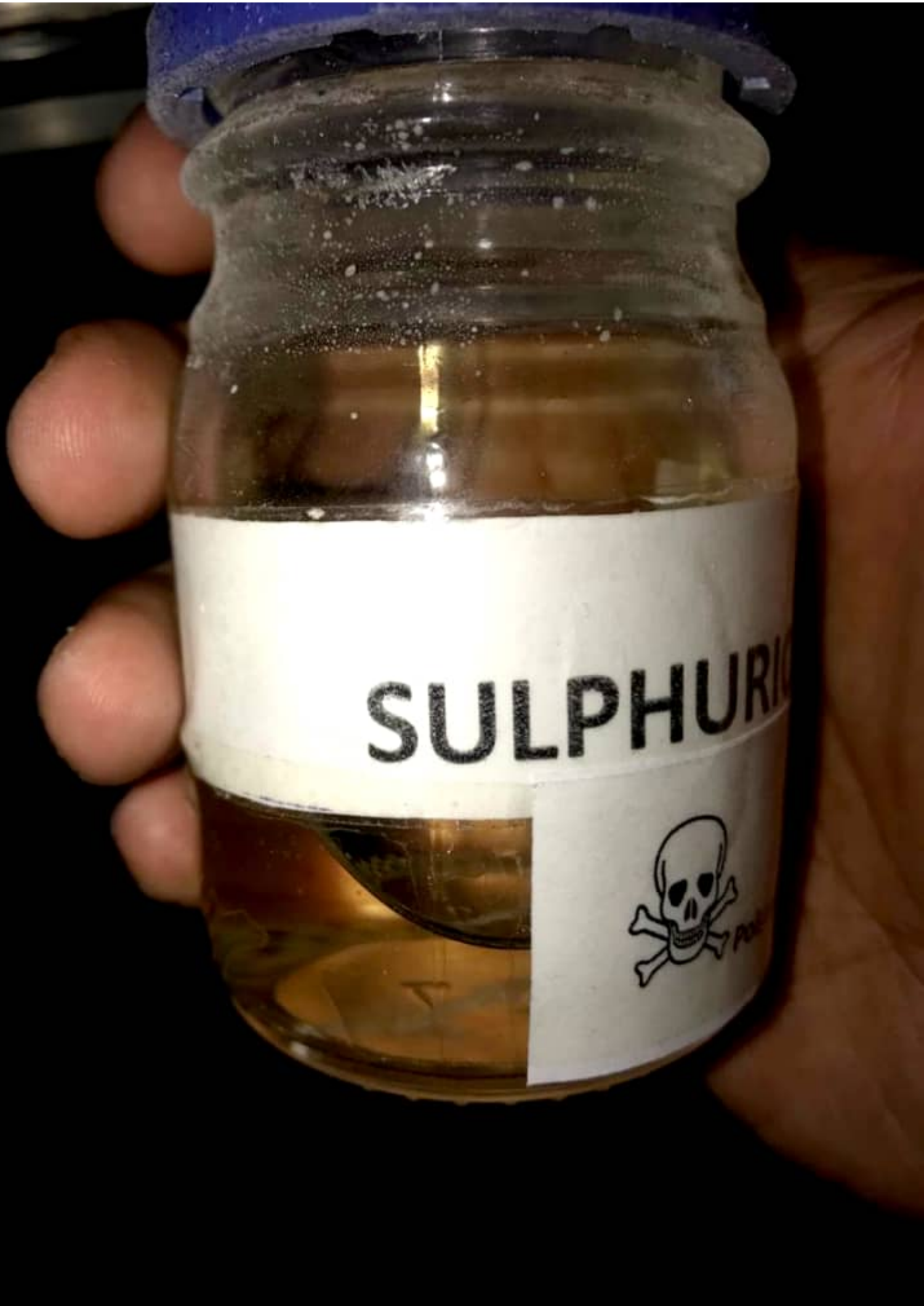


Defense Wound Finger & Hand

the art and science of performing
tests (with chemicals) to forestall decomposition

- a) Identify the given specimen
- b) Define mode, manner & cause of death





SULPHURIC



DEPRESSED FRACTURE SKULL



Department of
Forensic Medicine & Toxicology
Amr Nohood Medical College

CASE OF THROTLING SHOWING ABRASIONS AND BRUISES





BOLUS OF MEAT IN LARYNX



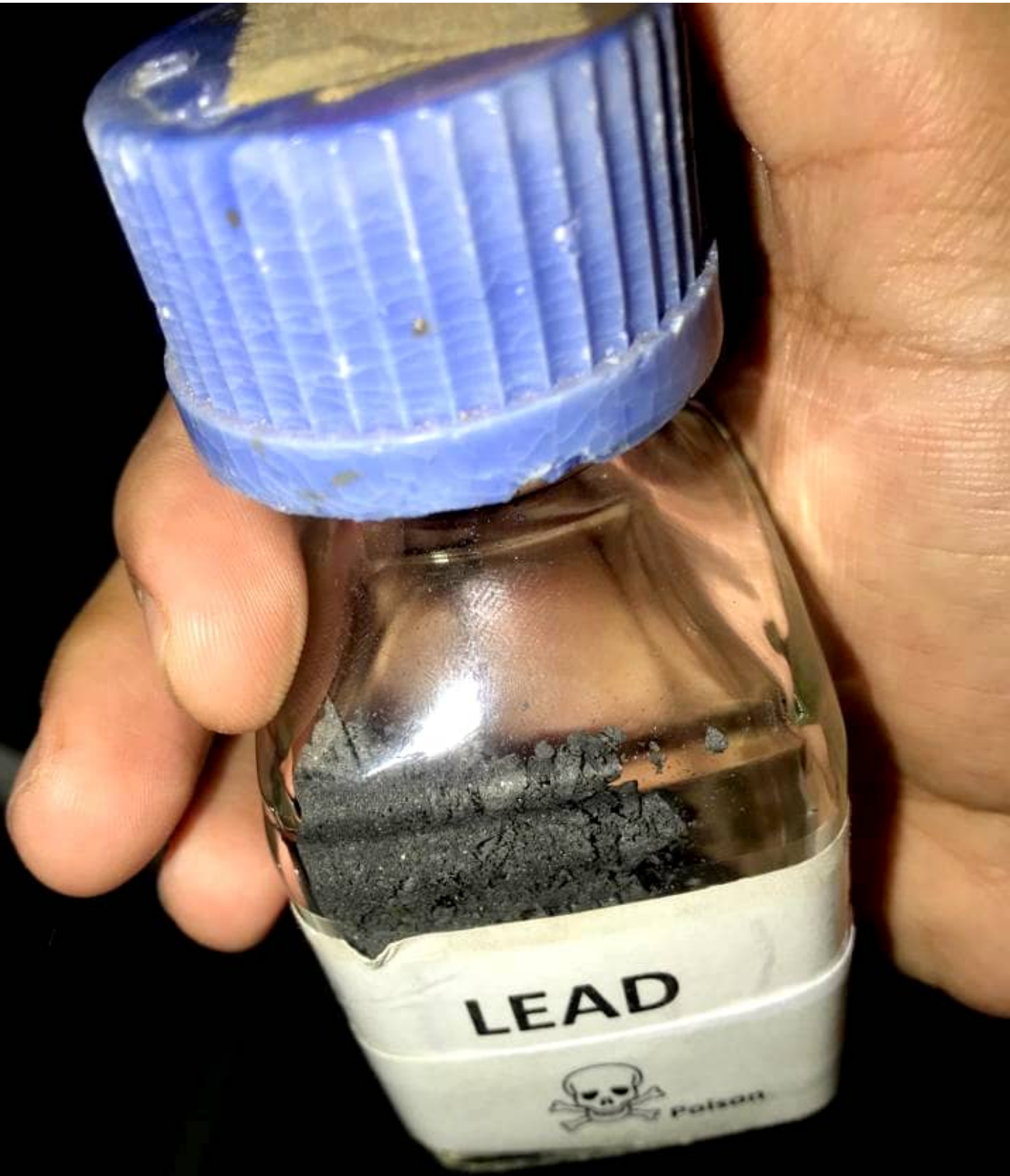
Department of
Forensic Medicine & Toxicology
Azra Naheed Medical College



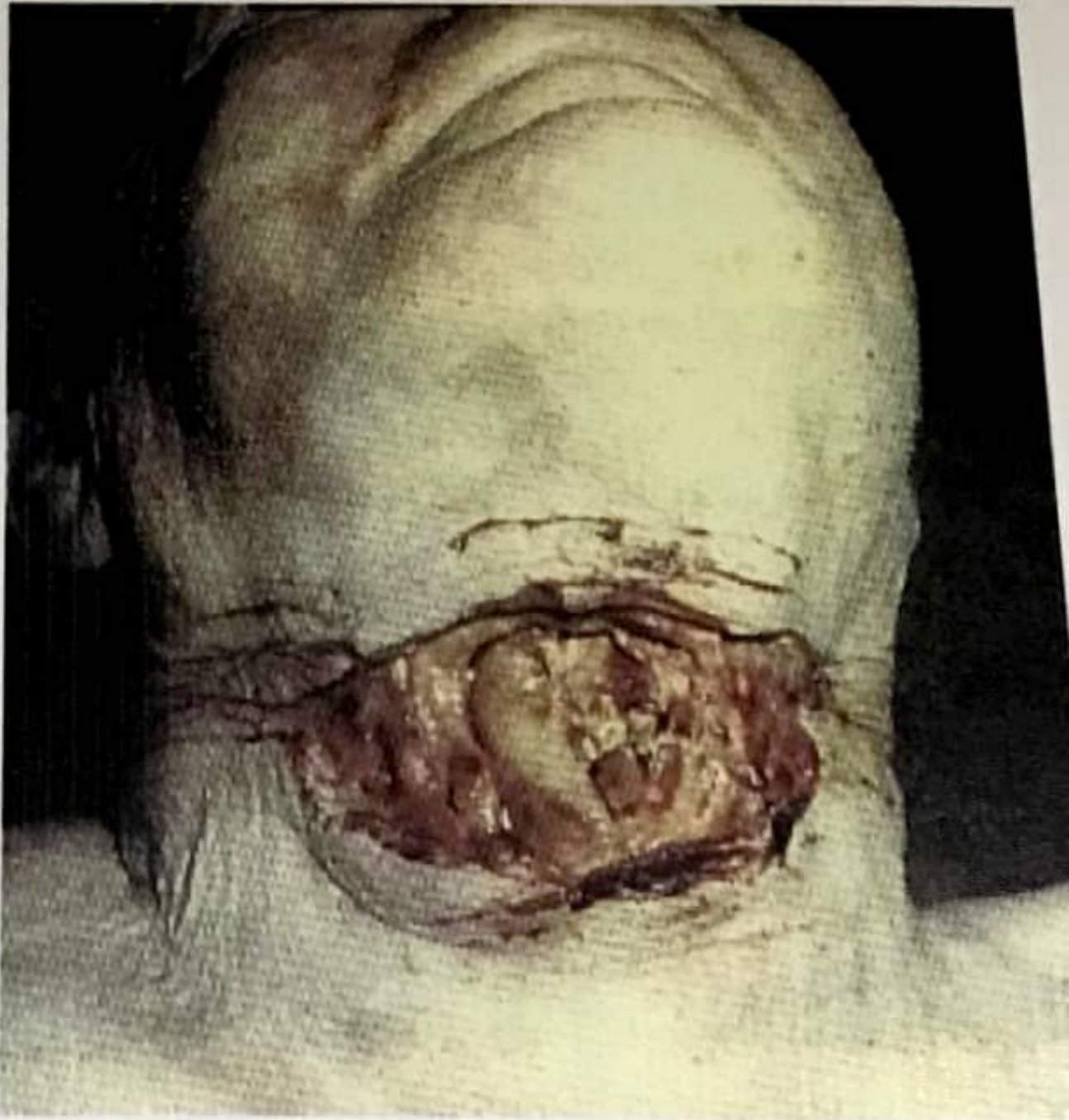
- a) Identify the specimen. (1)
- b) Define tolerance. (2)
- c) Name poison in which stomach has classical red velvet appearance. (1)







SUICIDAL CUT THROAT





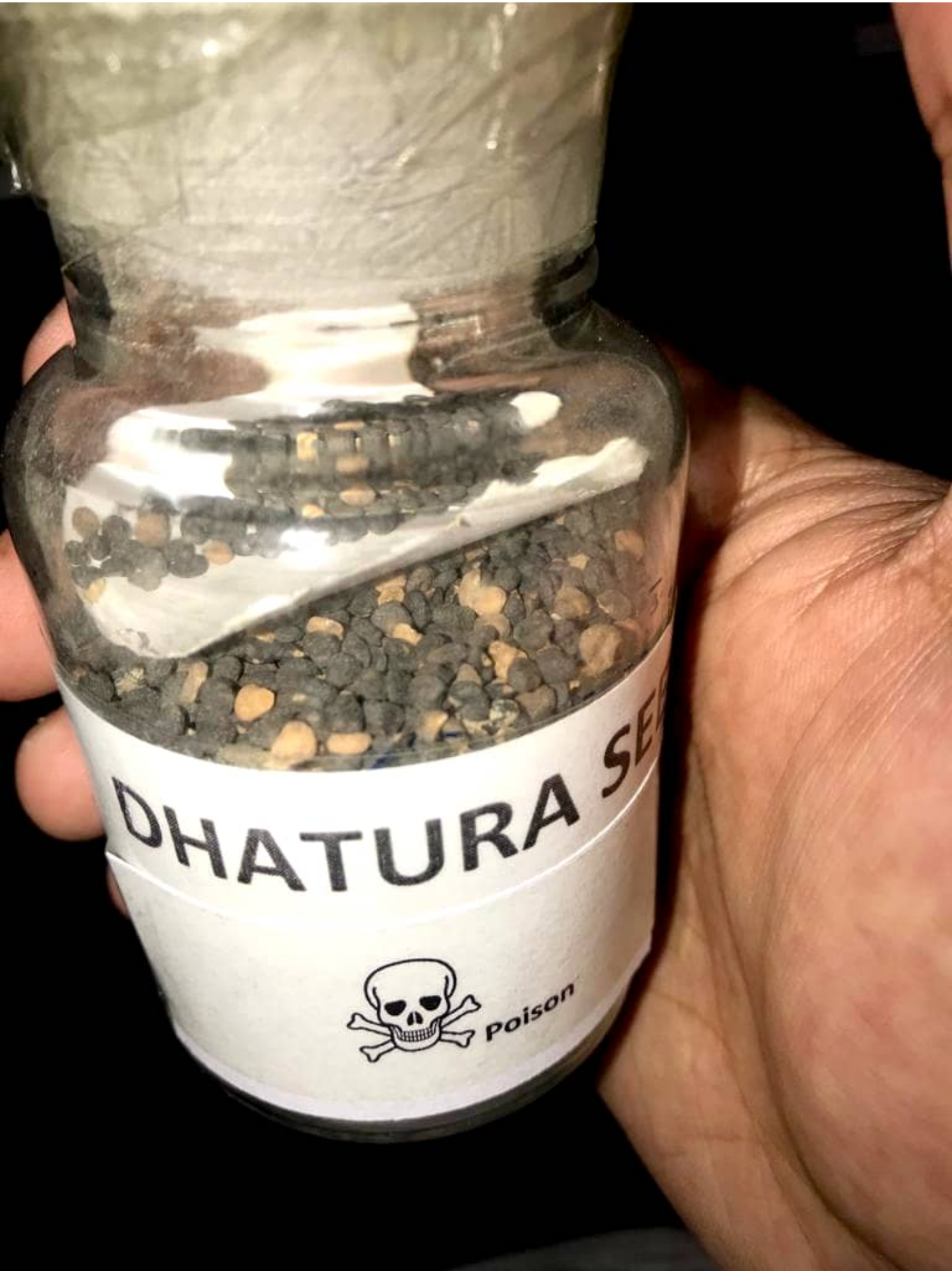
FIREARM EXIT WOUND



1011 SC SP FORENSIC









STAB WOUND



SC. SP. FORENSIC













Q -

- a) Identify the slide (1)
- b) Give two points of identification. (1)
- c) Name the chemical tests for its screening and confirmation. (2)

- a) Identify the pattern of finger print? (1)
- b) Describe the medicolegal importance of finger printing? (1)(1)
- c) What is 'Run Amok' (2)

Station 6

- a. Identify the instrument**
- b. Define laceration**

a) Identify sex? (1)

b) Support your diagnosis by mentioning any three characteristics present on bone. (3)

FIREARM ENTRY WOUND



1014 DC_SF_FORENSIC

LIGATURE MARK ON NECK



LACERATED WOUND



- a) Identify the injury & define it. (2)
- b) Define ectopic bruise & give it medicolegal significance. (2)

**ASPHYXIAL DEATH SHOWING CONGESTION
PATECHIAL HAEMORRHAGES IN EYES
AND ON THE FACE**



Draw autopsy incisions of skull, abdomen and thorax? (4)

(STATION - 10)

An elderly male died one day after developing hypostatic pneumonia. He remained bed ridden for the previous 10 days after fall from the ladder which caused fracture neck of left femur.

Read carefully the scenario and fill the medical certificate of death in this case. (4)

CAUSE OF DEATH

INTERVAL
BETWEEN ONSET AND DEATH

1.

Disease or condition directly leading to Death

(a) _____

Due to (or as a consequence of)

Antecedent causes, morbid conditions if any

(b) _____

Due to (or as a consequence of)

Giving rise to the above cause, stating the

(c) _____

Underlying condition last

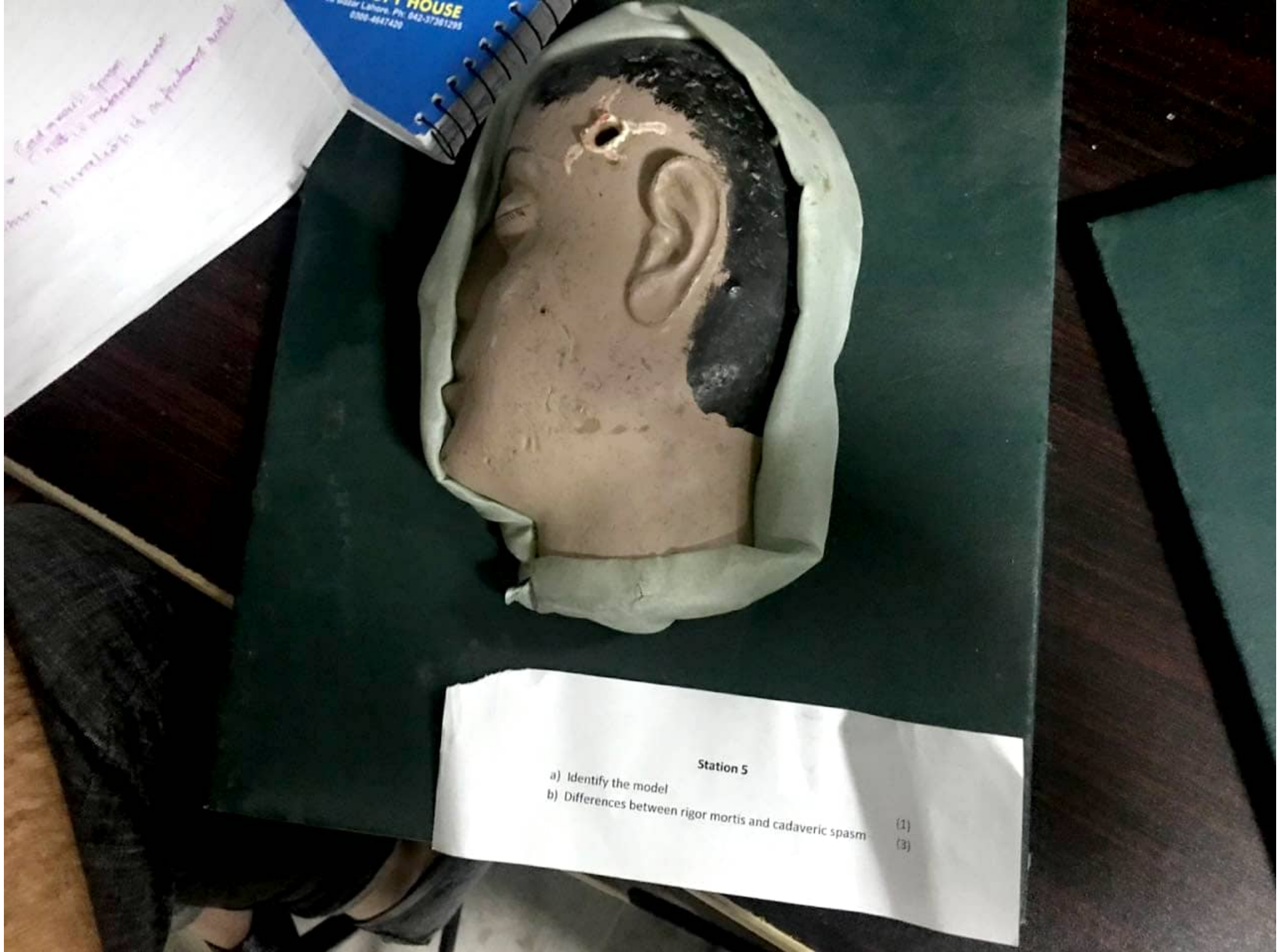
2.

Other significant conditions contributing

To the death, but not related to the

Disease or condition of causing it

How will you send a blood stained cloth to chemical examiner? (4)



Handwritten notes on a white paper, including the name 'Dr. Muhammad Aslam' and 'Department of Forensic Medicine'.

HOUSE
Bazaar Lahore, Ph: 992-3791295
0300-4617429

Station 5
a) Identify the model (1)
b) Differences between rigor mortis and cadaveric spasm (3)

Unobserved Station 6

Marks: 04

Time Allowed: 3.5 minutes

For Candidate:

Task:

Carefully examine the given sample material and answer the following questions:

1. Name its specific antidote. 1.5
2. Enlist the stages of chronic arsenic poisoning. 2.5

A- XVIII

(Cut along the dotted line)

- Carefully,
1. Give two identification
 2. Name the test to determine its origin, which

(Cut along the dotted line)

A - XXIV

...ing ...
o forestall decomposition

...
... (with

Marks: 04
For Candidate:
Task:

Unobserved Station 8

Time Allowed: 3.5 minutes

Carefully examine the specimen and answer the following questions:

1. Identify the specimen. 01
2. Name the active alkaloids of this poison. 02
3. Name the disease with which its clinical picture resembles. 01

(Cut along the dotted line)

A - XIX

Define
Dirt collar (1.5)

and science of preserving
(with chemicals) to forestall decomposition

- a) Identify the given specimen (1)
- Define mode, manner & cause of death (3)

A - XXVI

g question
y finger print pattern.
he finger print pattern most common in general population.

forming no
to forestall decomposition

Mark: 04

Unobserved

a) Identify the slide give two points of
identification

station (II)

(1 1/2)

b) Give four points of medicolegal significance
of hair

(2 1/2)

DEFENCE WOUNDS ON HAND



- a) Identify the given specimen (1)
- b) Give three differences between postmortem lividity & bruise (3)



Department of
Forensic Medicine & Toxicology
Azra Naheed Medical College

How will you send a blood stained cloth to chemical examiner? (4)

(3)
(1)

ventric spasm