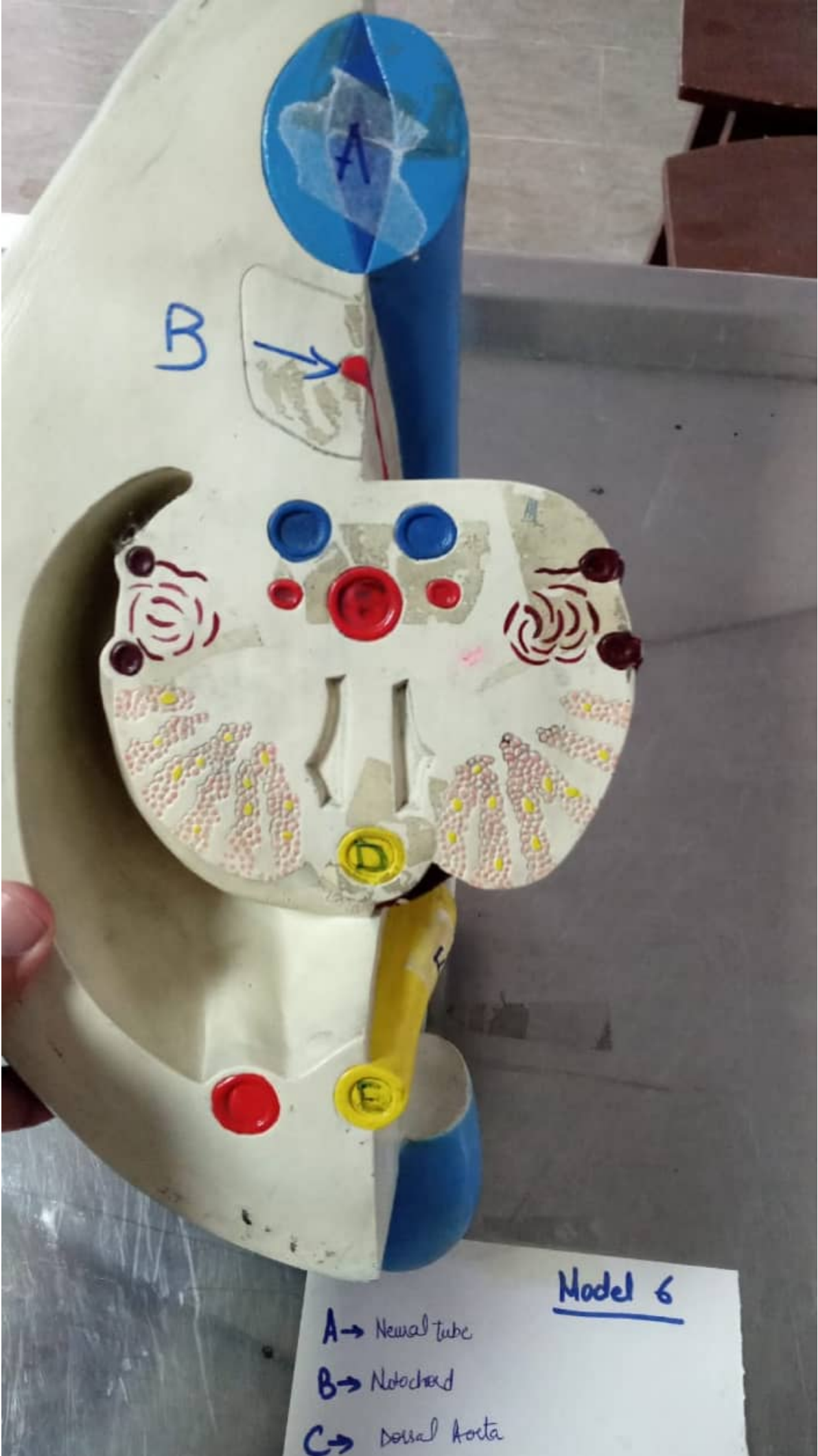
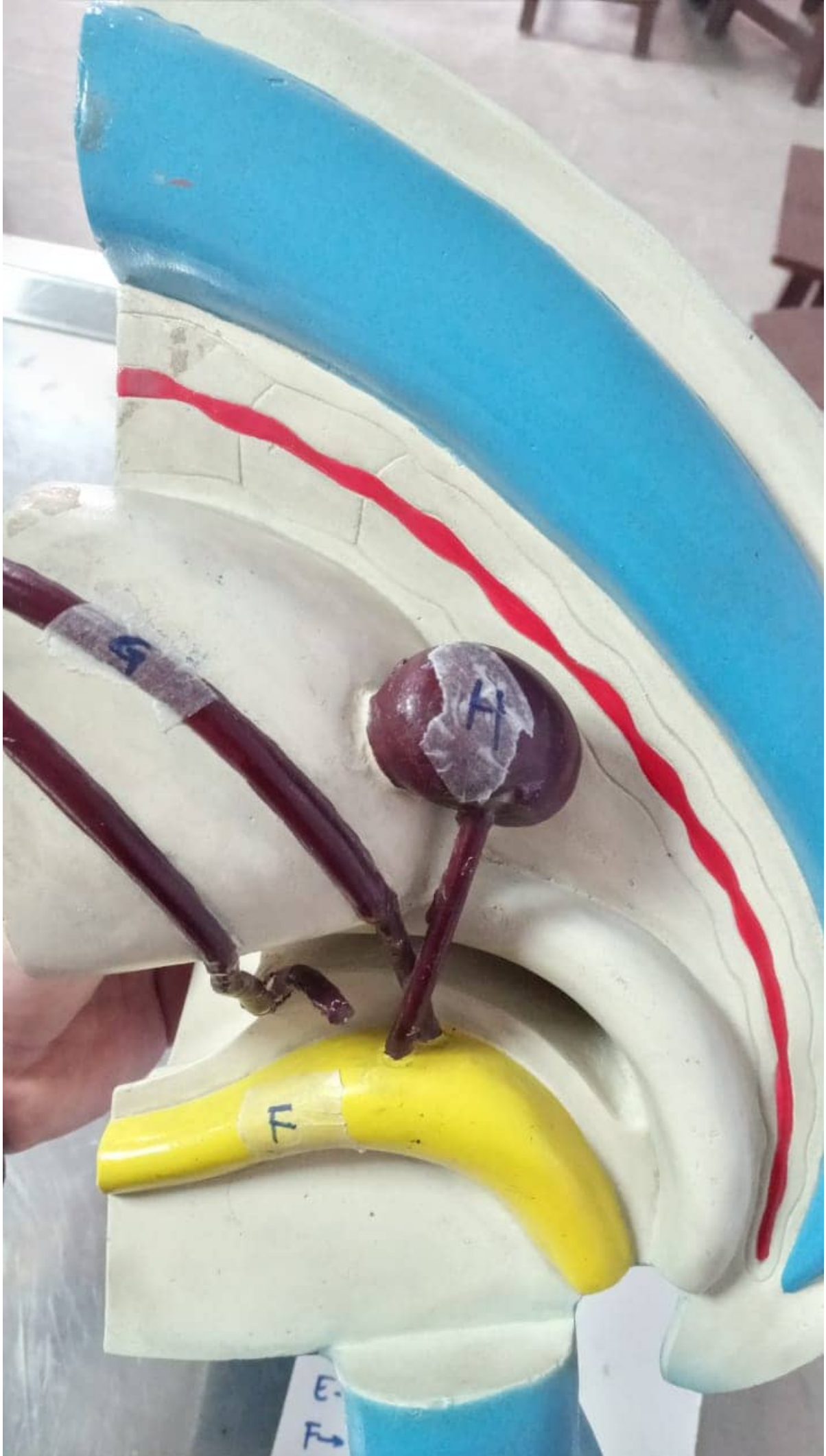


- 5
- A - Allantois
 - B - Cloaca
 - C - Aorta
 - D - Mesonephric duct
 - E - Ureteric bud



Model 6

- A -> Neural tube
- B -> Notochord
- C -> Dorsal Aorta



Model 6

A → Neural tube

B → Notochord

C → Dorsal Aorta

D → Vitelline duct

E → Allantois

F → Coelom

G → Mesonephric duct

H → developing kidney

Kidney (Cross section)

- A - Adrenal gland
- B - Renal artery
- C - Renal vein
- D - Pelvis
- E - Renal calyx
- F - Renal pyramid
- G - Interlobar artery
- H - Renal cortex
- I - Ureter
- ~~J -~~ ~~Ureter~~



Renal ①

Abdominal Aorta

1 Celiac trunk

2 Superior Mesenteric Artery

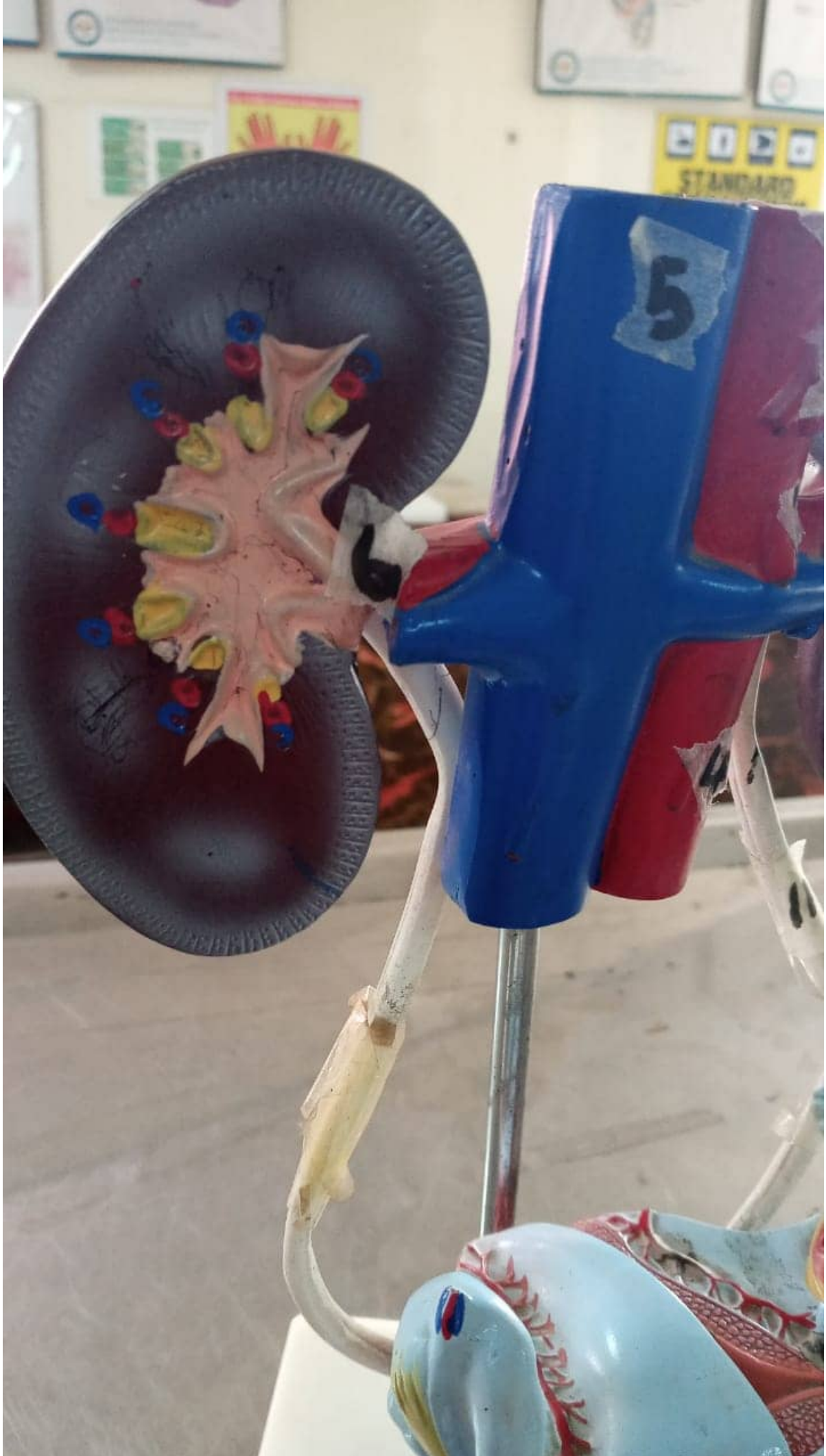
3 Inferior mesenteric artery

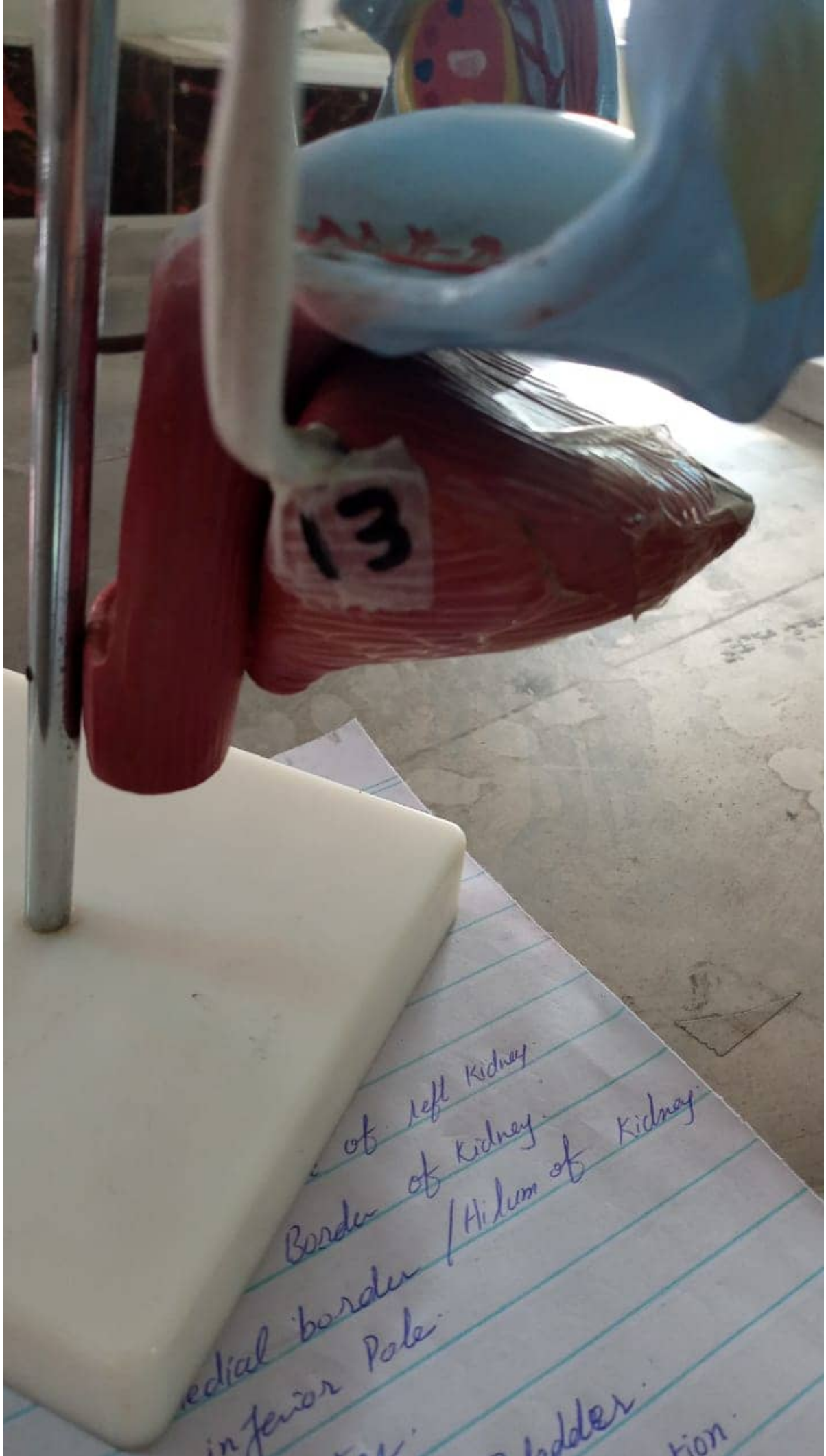


- Renal
- 1 Abdominal Aorta
 - 2 Celiac trunk
 - 3 Superior Mesenteric Artery
 - 4 Inferior Mesenteric artery
 - 5 Inferior vena cava
 - 6 Renal Artery
 - 7 upper/superior Pole of left kidney









Renal (2)

- 1 Abdominal Aorta.
- 2 Celiac trunk.
- 3 Superior Mesenteric Artery.
- 4 Inferior Mesenteric artery.
- 5 Inferior Vena Cava.
- 6 Renal Artery.
- 7 upper/Superior Pole of left Kidney.
- 8 Lateral Border of Kidney.
- 9 Medial border / Hilum of Kidney.
- 10 inferior Pole.
- 11 ureter.
- 12 Apex of Bladder.
- 13 Pelviureteric Junction.